

Disability Insurance (DI) Facts



Securing today
and tomorrow

\$1,483.10
Avg. Amount (Monthly)

\$408.42
Avg. Amount (Monthly)

\$470.77
Avg. Amount (Monthly)

Economic Lifeline
to America's Workers

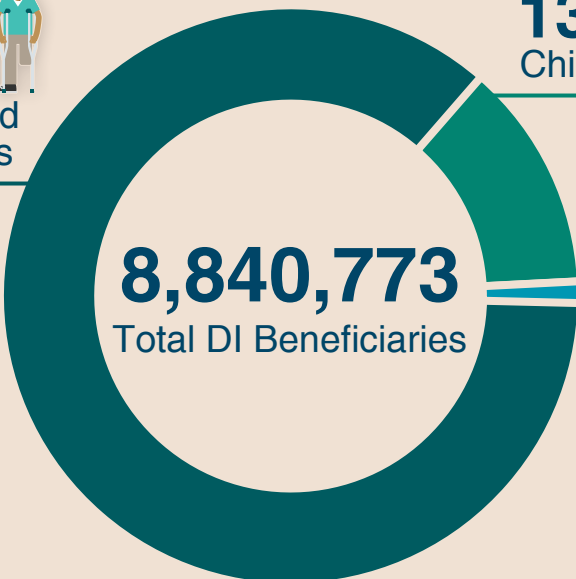


7,604,098
Disabled Workers

90,972
Spouses

1,145,663
Children

86%
Disabled
Workers



8,840,773
Total DI Beneficiaries

13%
Children

1%
Spouses



+\$11 Billion
Aggregate Benefits Paid (Monthly)

+\$142 Billion
Total DI Benefits Paid (Yearly)

Social Security supports workers and their families in every community across America